

Connected Buildings
Product Selection Guide



Metalux

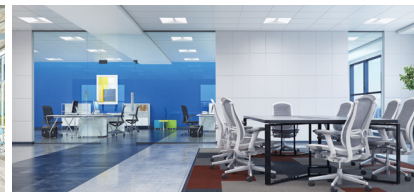
Celebrating 50+ years, Metalux offers an extensive line of LED lighting products including recessed, linear and industrial fixtures.

Metalux's complete family of luminaires are dedicated to the latest solid state lighting and driver technology for optimal performance and energy efficiency.

Metalux delivers innovation, quality, product availability, and responsiveness all with an affordable value proposition.

The product selection guides are simple yet powerful tools to help assist with product comparisons and selection based on features, performance and value.

- 2 **Commercial LED** - Planes of Light
- 3 **Commercial LED** - Linear
- 4 **Commercial LED** - Surface
- 5 **Specification LED** - Recessed
- 6 **Industrial LED** - High Bay
- 7 **Industrial LED** - Vaportite



Good

Better

Best

Click on products
to learn more

		Panels									
		CGT	FP	FPS	FPX	AP GR	GR	RTC	FR	Cruze Retrofit	Cruze ST
APPLICABILITY ¹	Education	★★★	★★★	★★★	★★★	★★★	★★★	★★★	★★	★★★	★★★
	Office	★★	★★	★★★	★★★	★★	★★	★★★	★★★	★★	★★★
	Healthcare	★	★	★	★★	★★	★★	★★	★★	★	★★
	Retail	★★	★★★	★★★	★★★	★★	★★	★★	★★	★	★★★
FEATURES / PERFORMANCE	Sizes	1x4, 2x2, 2x4	1x4, 2x2, 2x4	1x4, 2x2, 2x4	1x4, 2x2, 2x4	2x2, 2x4	1x4, 2x2, 2x4	1x4, 2x2, 2x4	2x2, 2x4	1x4, 2x2, 2x4	1x4, 2x2, 2x4
	lm/W (Max)	115	136	120	130	140	140	126	130 STD/150 HP	138	157
	Lum (Max)	5,300	7,000	6,500	6,400	6,400	18,000	7,000	3200 STD/8000 HP	5,000	17,000
	Life (@60K)	L84	L86	L87	L87	L90	L89	L75	L88	L85	L90
	Lens	Frost, Smooth	Frost, Smooth	Frost, Smooth	Frost, Smooth	Clear, Prismatic	Frost, Prismatic	Frost, Ribbed	Frost, Smooth	Frost, Ribbed	Round or Square, Frost - Ribbed or Smooth, Perf Inlays
	Emergency	Remote	Remote	Remote	Integrated	No	Integrated	Integrated	Integrated	Integrated	Integrated
	CRI	80+	80 / 90	80+	80+	80+	80+	80+	80+	80+	80+ / 90
	Sensor Location	Tile Mount	Tile Mount	Tile Mount	Integrated	Tile Mount	Integrated	Integrated	Integrated	Integrated	Integrated
	DLC	Standard	Premium	Standard	Premium	Premium	Premium	Premium	Premium	Premium	Premium
	Door	No	No	No	No	Yes	Yes	No	Yes	None	Yes
	Lumen / CCT Select	No	No	Yes	No	No	No	No	No	No	No
	VividTune™	No	No	No	No	No	Tunable White	No	No	No	Tunable White
INTEGRATED CONTROLS	Stand Alone Daylight / Occupancy				✓		✓	✓	✓	✓	✓
	WaveLinX Lite				✓		✓			✓	✓
	WaveLinX				✓		✓	✓	✓	✓	✓
	DLVP				✓		✓		✓		✓

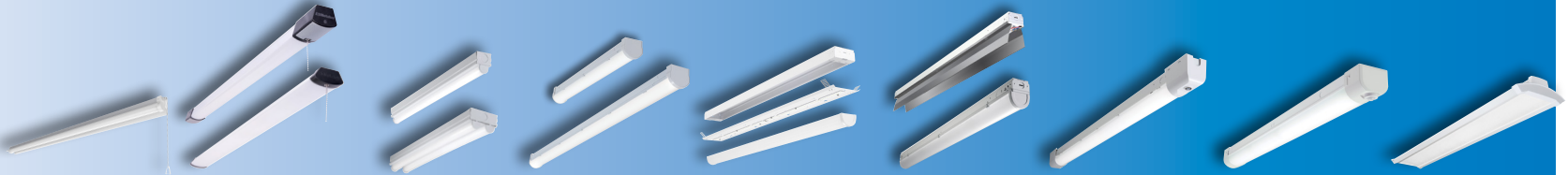
Notes: 1. ★★★ = high applicability, ★★ = medium applicability, ★ = low applicability, blank = non-applicable

Good

Better

Best

Click on products
to learn more



		APSHP	SHP	ST	SLSTP	SSRK Retrofit	SNLED	SRL	SWLED	WSL
APPLICABILITY ¹	Education			★★	★★★★	★	★★★★	★★★★	★★★★	★★
	Office			★★	★★★★	★	★★★★	★★★★	★★★★	★★★★
	Healthcare				★	★	★★	★★	★	★★
	Retail			★	★★	★★★★	★★★★	★★★★	★	★★★★
	Industrial			★★	★★	★★★★	★★★★	★★★★	★★	★★
	Residential	★★★★	★★★★	★★★★	★★					
FEATURES / PERFORMANCE	Length	3', 4' Nominal	4' Nominal	2', 4', 8'	2', 4', 8'	4', 8'	2', 4', 8'	4', 8'	4'	4', 8'
	lm/W (Max)	105	105	108	125	159	150	149	150	121
	Lum (Max)	4,000	4,600	8,400	10,500	8,000 / 4 ft.	17,000	11,000	8,000	16,000
	Life (@60K)	L70/50K	L70/50K	L70/50K	L70/50K	L94	L87	L82	L91	L81
	Lens	Lens Optic and Reflector	Frost, Poly	White, Single or Dual Lens	Clear, Poly	Frost, Acrylic	Frost, Acrylic	Frost, Acrylic	(Vandal Resistant) Frost, Acrylic	WaveStream, Acrylic
	Emergency	None	None	None	None	Integrated	Integrated	Integrated	Integrated	Integrated
	CRI	80+	80+	80+	80+	80+	80+	80+	80+	80+
	Sensor Location	N/A	N/A	Remote	Simple ("CS")	N/A	Integrated	Integrated	Integrated	Integrated
	DLC	No	Energy Star	Standard	Standard	Premium	Premium	Premium	Standard	Standard
INTEGRATED CONTROLS	Basic Occupancy				✓	✓	✓	✓	✓	✓
	Stand Alone Daylight / Occupancy					✓	✓	✓	✓	✓
	WaveLinx Lite							✓	✓	✓
	WaveLinx							✓	✓	✓
	DLVP									✓

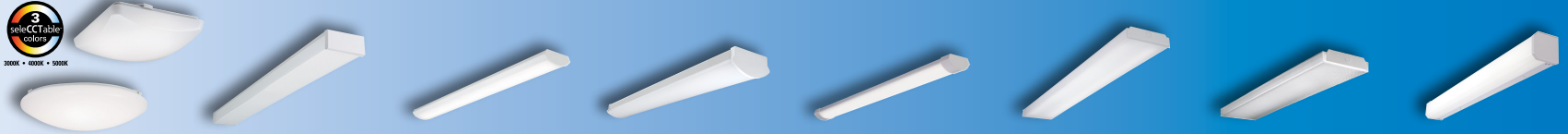
Notes: 1. ★★★★★ = high applicability, ★★★★★ = medium applicability, ★ = low applicability, blank = non-applicable

Good

Better

Best

Click on products
to learn more



		FM CCT	WP	WPLD	LW	CWPLD	WNLED	WSNLED	BCLED
APPLICABILITY ¹	Education	★★	★★	★★	★★★	★★★	★★★	★★	★★
	Office	★	★	★★	★★	★★	★★	★★★	★
	Healthcare	★	★	★	★	★	★	★★	★★
	Retail	★★	★	★	★★	★★	★	★★★	★
	Industrial		★		★	★	★★		
	Residential	★★★	★★★	★★			★	★	
FEATURES / PERFORMANCE	Sizes	9", 11", 15", 19"	2' and 4', 5.1" wide	2', 4'	4', 6.8" wide	4'	2', 4'	2', 4'	2', 4'
	lm/W (Max)	85	114	110	122	115	118	108	120
	Lum (Max)	2,400	3,400	4,700	4,617	5,000	5,000	6,500	4,800
	Life (@60K)	L70/50K	L70/50K	L70/50K	L82	L70/50K	L88	L87	L82
	Lens	Frost / Acrylic	Prismatic Acrylic	Clear, Poly	White Ribbed Acrylic	Frost, Poly	Frost, Acrylic	Frost + Film, Acrylic	Frost, Smooth
	Emergency	No	No	No	Integrated	No	Integrated	Integrated	Integrated
	CRI	80+	80+	80/90	80+	80+	80+	80+	80+
	Row Mount	NA	N/A	No	Yes	Yes	Yes	Yes	Yes
	DLC	Energy Star	Standard	Standard	DLC, Title 24 Non-Res	Standard	Standard	Standard	None
INTEGRATED CONTROLS	Basic Occupancy								
	Stand Alone Daylight / Occupancy								
	Enlighted								

Notes: 1. ★★★ = high applicability, ★★ = medium applicability, ★ = low applicability, blank = non-applicable

Specification LED Recessed

Metalux

Good

Better

Best

Click on products to learn more

		Cruze		SkyRidge	RLN	Ovation	Accord	Perceive	InDepth	Encounter
		Cruze ST	Cruze SB							
APPLICABILITY	Education	★★★	★★★	★	★★	★★	★	★★★	★★★	★★
	Office	★★★	★★	★★★	★★★	★★★	★★★	★★★	★★★	★★★
	Healthcare	★★	★★★	★★	★★	★	★★	★★★	★★★	★★★
	Retail	★★★	★★	★★	★★	★★★	★★	★★	★★	★★
FEATURES / PERFORMANCE	Sizes	1x4, 2x2, 2x4	1x4, 2x2, 2x4	1x2, 1x4, 2x2, 2x4	1x4, 2x2, 2x4	1x4, 2x2, 2x4	1x4, 2x2, 2x4	1x4, 2x2, 2x4	1x4, 2x2, 2x4	1x2, 1x4, 2x2, 2x4, Metric
	lm/W (Max)	157	157	150	139	109	127	137	127	141
	Lumens (Max)	17,000	7,500	6,400	8,000	5,000	7,300	9,000	9,000	7,400
	Life (@60K)	L90	L84	L92	L93	L89	L89	L85	L86	L92
	Lens	Round or Square, Frost - Ribbed or Smooth, Perf Inlays	Round, Frost - Ribbed or Smooth	Acrylic (WaveStream)	Frosted Acrylic	Metal Perforated	Frosted Acrylic	Acrylic (Perceive Optics)	1", 2" Cube Regress 1", 2", 3" Cube Drop 2" Curve Regress & Drop	Acrylic (WaveStream)
	Service from Below	No	Yes	No	Yes	No	Yes	Yes	No	No
	Emergency	Integrated	Integrated	Integrated	Integrated	Integrated	Integrated	Integrated	Integrated, Indicator is Remote	Integrated
	CRI	80+ / 90	80+ / 90	80+	80+ / 90	80+	80+	80+ / 90	80+	80+ / 90
	Sensor Location	Integrated	Integrated	Integrated	Integrated	Tile Mount	Integrated	Integrated	Tile Mount	Integrated
	DLC	Premium	Premium	Premium	Premium	Standard	Premium	Premium	Premium	Premium
	Air Venting	Yes	None	Yes	None	Yes	Yes	None	Planned	Yes
	VividTune™	Tunable White	Tunable White	No	Tunable White	No	No	Planned	No	Tunable White
INTEGRATED CONTROLS	Stand Alone Daylight / Occupancy	✓	✓	✓	✓	✓	✓	✓		✓
	WaveLinX Lite	✓	✓	✓	✓			✓		✓
	WaveLinX	✓	✓	✓	✓	✓	✓	✓	✓	✓
	DLVP	✓	✓	✓	✓		✓	✓	✓	✓

Notes: 1. ★★★ = high applicability, ★★ = medium applicability, ★ = low applicability, blank = non-applicable

Good

Better

Best

Click on products to learn more



		LHB	VHB	UHB	ILED	Steeler	HBLED	OHB	XHB	Benchmark
APPLICABILITY ¹	Big Box Retail	★	★	★★	★★★	★★	★	★★★		★
	Sports / Recreation	★★	★★	★★	★	★★★	★★	★★★		★★
	Warehouses	★★★	★★★	★★	★★★	★★★	★★★	★★★		
	Manufacturing	★★	★★	★★	★	★★★	★★★	★★★	★★★	★★★
	Cold Storage	★	★★★	★		★	★	★★★		★★
	Large Indoor					★★	★★★	★★★	★★★	★★
	Complex Environments		★	★★		★			★★★	★★★
FEATURES / PERFORMANCE	Lumen Range	12,000 - 36,000	9,000 - 24,000	12,000 - 30,000	5,000 - 32,000	9,000 - 36,000	12,000 - 60,000	12,000 - 60,000	60,000 - 85,000	12,000 - 70,000
	Efficacy (Max)	140 lm/W	147 lm/W	137 lm/W	155 lm/W	152 lm/W	186 lm/W	207 lm/W	132 lm/W	181 lm/W
	CRI	80	70, 80, 90	80	80	80	70, 80	70, 80, 90	70, 80	70, 80
	Distribution	M	N, W	M	N, W	N, M, W	N, W	N, M, W	N, M, W, EW, UW	N, M, W
	Sizes	13" x 2' & 4'	< 2'	12" Dia	4', 8'	17" Dia	4'	Scalable	22" Dia	17", 25" Dia
	Housing ²	CRS	CRS / Extruded	Diecast	CRS	CRS / Diecast	CRS	CRS	Diecast	Diecast
	Lensing	Acrylic	Polycarbonate	Polycarbonate	Optional	Polycarbonate	Optional	Acrylic	Polycarbonate	Acrylic
	Uplight	None	None	None	Up to 5%	Up to 10%	None	None	None	None
	Life (@ 60K hrs)	L84	L83	L91	L86	L88	L84	L96	L87	L92
	Ambient Range	-20C to 50C	-40C to 40C	-40C to 45C	-40C to 35C	-40C to 55C	-40C to 55C	-40C to 55C	-40C to 65C	-40C to 65C
	Emergency	None	Remote	None	Integrated	Remote	Integrated	Integrated	Remote	Remote
	Ratings	Damp	Damp	IP65	Damp	IP65 Optics	Damp	Damp	IP66, NEMA 4X	IP66
	DLC	Premium	Standard, Premium	Premium	Premium	Premium	Premium	Premium	Premium	Premium
INTEGRATED CONTROLS	Basic Occupancy		✓		✓	✓	✓	✓		✓
	Stand Alone Daylight / Occupancy		✓		✓	✓	✓	✓		✓
	WaveLinX		✓			✓	✓	✓		✓
	Enlighted ³		✓			✓	✓	✓		✓

Notes: 1. ★★★ = high applicability, ★★ = medium applicability, ★ = low applicability, blank = non-applicable

2. CRS=Cold-rolled Steel, Extruded=Extruded Aluminum, Diecast=Diecast Aluminum.

3. Location data for asset tracking.

Metalux's sealed and gasketed products deliver maximum operation and reliability in complex environments where the elements require more than just a standard light fixture.



Click on products
to learn more

Good

Better

Best

		APVT	VT2	VT3	VT4S	VT4
APPLICABILITY ¹	Canopy	★★	★★	★★		
	Storage	★★★	★★★	★★		
	Parking Garage		★★	★★★		
	Warehouse	★	★★★	★★★	★	★
	Food Processing		★★	★★★	★★	★★
	Manufacturing		★★	★★	★★★	★★★
	Complex Environments		★	★★★	★★★	★★★
FEATURES / PERFORMANCE	Lumen Range	2,000 - 4,000	2,000 - 22,000	2,000 - 8,000	9,000 - 18,000	9,000 - 30,000
	Efficacy (Max)	132 lm/W	150 lm/W	154 lm/W	165 lm/W	146 lm/W
	Distribution ²	G	G, W	G, W, P	G	G
	Sizes	2', 4'	2', 4', 8'	2', 4'	2'	4'
	Housing	Polycarbonate	Fiberglass/Polyester	Fiberglass/Polyester	Fiberglass	Fiberglass
	Lensing	Polycarbonate	DR Acrylic or Polycarb	DR Acrylic or Polycarb	DR Acrylic or Polycarb	DR Acrylic or Polycarb
	Wet Location	Yes	Yes	Yes	Yes	Yes
	IP Rating	None	IP65	IP65, 66, 67	IP65, 66, 67, 69	IP65, 67
	NSF	None	Yes	Yes	Yes	Yes
	NEMA 4X	None	None	None	Yes	Yes
	Life (@60K hrs)	L70 at 54K	L91	L91	L91	L92
	Ambient Range	-20C to 30C	-40C to 35C	-40C to 50C	-40C to 40C	-40C to 40C
	Emergency	None	Yes	Yes	Yes	Yes
	Vandal Resistant	None	Optional	Optional	Optional	Optional
	DLC	Standard	Premium	Premium	Premium	Premium
INTEGRATED CONTROLS	Basic Occupancy		✓	✓	✓	✓
	Stand Alone Daylight / Occupancy		✓	✓	✓	✓
	WaveLinx					
	Enlighted ³					

Notes: 1. ★★★ = high applicability, ★★ = medium applicability, ★ = low applicability, blank = non-applicable
 2. G=General, W=Wide, P=Parking Garage.
 3. Location data for asset tracking.

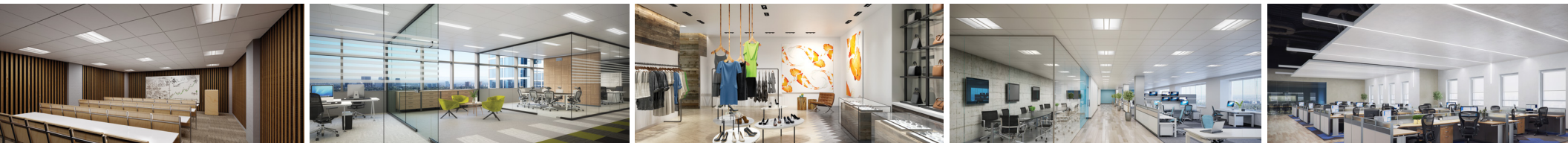
Corelite Neo-Ray

Corelite and Neo-Ray offer a unique array of high performance LED luminaires perfectly suited for today's architectural interior environments.

Combining modern details and high optical performance, Corelite and Neo-Ray's innovative approach to linear, recessed and surface-mounted luminaires make it the ultimate solution for applications with both demanding energy requirements and uncompromising aesthetics.

The product selection guides are simple yet powerful tools to help assist with product comparisons and selection based on features, performance and value.

- 9-10 Architectural LED - Linear Suspended**
- 11 Architectural LED - Recessed**
- 12 Architectural Linear LED- Lines of Light**



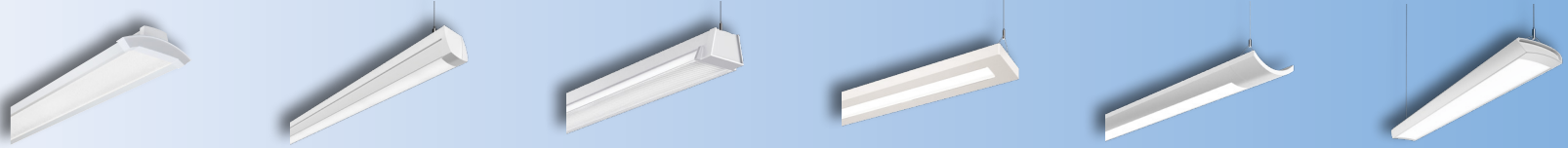
Architectural LED

Linear Suspended

Good

Better

Click on products to learn more



		WSL	Hugo	RZL	Jaylum	Iridium i3	Continua CTA
APPLICABILITY ¹	Education	★★	★★★	★★	★★★	★★★	★★★
	Office	★★★	★★	★	★★★	★★	★★
	Healthcare	★★	★★	★★	★★	★★	★★
	Retail	★★★	★★★	★★★	★	★	★★
FEATURES / PERFORMANCE	Construction	Cold Rolled Steel	Extruded Aluminum	Cold Rolled Steel	Cold Rolled Steel	Cold Rolled Steel	Extruded Aluminum
	Lengths	4', 8', Cont.	4', 8', 12', Cont.	4', 8', 12', Cont.	4', 8', Cont.	4', 8', Cont.	4', 8', 12', Cont.
	lm/W (Max)	121	145	135	157	158	147
	Lumens (Max)	8000 (2000 lms/ft)	8000 (2000 lms/ft)	8800 (2200 lms/ft)	8000 (2000 lms/ft)	8000 (2000 lms/ft)	6000 (1500 lms/ft)
	Up/Down % Options	3	2	2	5	5	4+
	CIE Type	Direct, Semi-Direct	Direct, Semi-Direct	Direct, Semi-Direct	Direct/Indirect	Direct/Indirect	Direct, Direct/Indirect
	Life (@60K)	L81	L85	L85	L93	L93	L84
	Shielding	WaveStream - Acrylic	Frost - Smooth, Drop Lens, Baffle	Frost -Linear Prismatic, Baffle	Frost - Smooth	Frost - Smooth	Frost - Continuous Roll Lens
	Companion Family Fixtures	Surface	Surface	Surface	Wall, Sconce	-	Wall
	Driver Location	Integral	Integral	Integral	Integral	Integral	Integral
	Emergency	Integrated	Integrated	Integrated	Integrated	Integrated	Integrated
	CRI	80+	80+ / 90	80+ / 90	80+ / 90	80+ / 90	80+ / 90
	Sensor Location	Integrated	Integrated, Side Mount	Integrated	Integrated	Integrated	Integrated, Side Mount
	DLC	Standard	Premium	Premium	Premium	None	Premium
	VividTune™	No	No	No	Tunable White	Tunable White	No
INTEGRATED CONTROLS	Stand Alone Daylight / Occupancy	✓		✓	✓	✓	
	WaveLinx	✓	✓	✓	✓	✓	✓
	Enlighted	✓	✓	✓	✓	✓	✓
	DLVP	✓					

Notes: 1. ★★★ = high applicability, ★★ = medium applicability, ★ = low applicability, blank = non-applicable

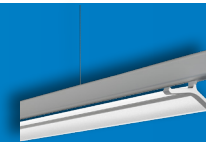
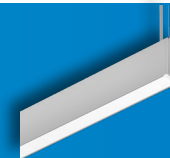
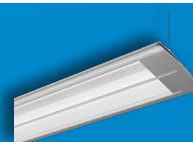
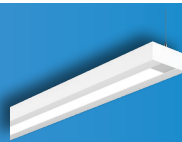
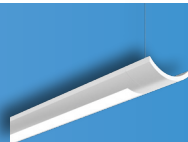
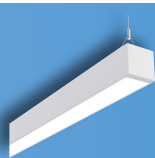
Architectural LED

Linear Suspended (continued)

Metalux | Corelite | Neo-Ray

Best

Click on products to learn more



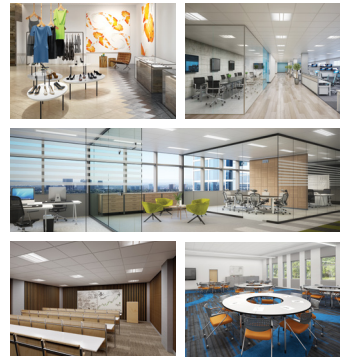
		Continua SQ4	Iridium i2 WaveStream	Element /Loft / Vertechs WaveStream	Divide	Define	Converge
APPLICABILITY ¹	Education	★★★	★★★	★★★	★★	★★	★★★
	Office	★★★	★★	★★	★★★	★★★	★★★
	Healthcare	★★	★★	★★	★	★★	★
	Retail	★★	★	★	★★	★	★★
FEATURES / PERFORMANCE	Construction	Extruded Aluminum	Cold Rolled Steel	Extruded Aluminum	Extruded Aluminum	Extruded Aluminum	Extruded Aluminum
	Lengths	4', 6', 8', 12', Cont.	4', 8', Cont.	4', 8', 12', Cont.	4', 8', Cont.	2' - 12', Cont.	4', 8', Cont.
	lm/W (Max)	135	114	116	140	164	119
	Lumens (Max)	10,800 lm (2,700 lms/ft)	7200 (1800 lms/ft)	7200 (1800 lms/ft)	6000 (1500 lms/ft)	9900 (2475 lms/ft)	6700 (1700 lms/ft)
	Up/Down % Options	20+	3	3	2	∞	3
	CIE Type	Direct, Direct/Indirect	Direct, Direct/Indirect	Direct, Direct/Indirect	Direct, Direct/Indirect	Direct, Direct/Indirect, Indirect	Direct, Direct/Indirect
	Life (@60K)	L84	L81	L81	L87	L90	L85
	Shielding	Frost - Continuous Roll Lens	Frost - Linear Prismatic	Frost - Smooth	WaveStream - Acrylic Specular, Diffuse	Frost - Smooth, Drop & Regressed, Asymmetric and Batwing Lens	WaveStream - Acrylic Diffuse
	Companion Family Fixtures	Recessed	-	-	Surface, Wall, Recessed	Surface, Wall, Recessed, Perimeter	-
	Driver Location	Integral	Integral	Integral	Integral	Integral	Remote w/ Luxwire
	Emergency	Integrated	Integrated	Integrated	Integrated	Integrated	Remote
	CRI	80+ / 90	80+ / 90	80+ / 90	80+ / 90	80+ / 90	80+ / 90
	Sensor Location	Integrated, Endcap/Side Mount	Integrated	Integrated	Integrated	Integrated	Tile Mount
INTEGRATED CONTROLS	DLC	Premium	Standard	Standard	Premium	Premium	None
	VividTune™	No	No	No	No	Tunable White	No
	Stand Alone Daylight / Occupancy		✓	✓		✓	✓
	WaveLinx	✓	✓	✓	✓	✓	✓
	Enlighted	✓	✓	✓	✓	✓	✓
	DLVP						✓


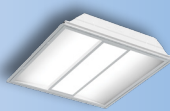

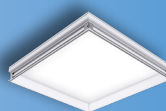



Notes: 1. ★★★ = high applicability, ★★ = medium applicability, ★ = low applicability, blank = non-applicable

Architectural LED Recessed

Corelite

Whether lighting schools, offices, or hospitals on a budget, **Corelite's** commercial recessed products offer a complete family of innovative, affordable, and energy saving LED solutions for your next project.



		Good		Better		Best		
Click on products to learn more								
		Class RX/ZX	Class D3X	Class R2X	InDepth	Bridge	Divide	Class R3/Z3
APPLICABILITY	Education	★★★	★★	★★★	★★★	★★	★★	★
	Office	★★★	★★★	★★★	★★★	★★★	★★★	★★★
	Healthcare	★	★★	★★★	★★	★	★★★	★★
	Retail	★★	★★	★★	★★	★★	★	★
FEATURES / PERFORMANCE	Sizes	1x4, 2x2, 2x4	1x4, 2x2, 2x4	1x4, 2x2, 2x4, Metric	1x4, 2x2, 2x4	1x4, 2x2, 2x4, Metric	1x4, 2x2, 2x4	1x4, 2x2, 2x4, Metric
	lm/W (Max)	145	139	134	127	118	137	141
	Lumens (Max)	7600	7800	8000	9000	7300	7500	7200
	Life (@60K)	L94	L93	L87	L84	L80	L87	L87
	Lens	Round (R), Flat (Z) Frost - Smooth	Frost - Smooth, Perf Inlays	Round (R), Frost - Smooth	1", 2" Cube Regress 1", 2", 3" Cube Drop 2" Curve Regress & Drop	Acrylic (Wavestream), Perf Inlays	Acrylic (Wavestream), Specular, Diffuse	Round (R), Flat (Z) Frost - Ribbed, Perf Inlays
	Emergency	Integrated	Integrated	Integrated	Integrated, Indicator is Remote	Integrated	Integrated	Integrated
	CRI	80+ / 90	80+ / 90	80+ / 90	80+	80+ / 90	80+ / 90	80+ / 90
	Sensor Location	Integrated	Integrated	Tile Mount	Tile Mount	Integrated	Integrated	Tile Mount
	DLC	Standard	Standard	Standard	Premium	Standard	Premium	Premium
	Air Return	Yes	None	Yes	Planned	Yes, concealed	None	Yes
	VividTune™	Tunable White	Tunable White	No	No	No	No	No
INTEGRATED CONTROLS	Stand Alone Daylight / Occupancy	✓	✓	✓		✓	✓	✓
	WaveLinx	✓	✓			✓	✓	
	WaveLinx, No Sensor	✓	✓		✓			
	Enlighted	✓	✓	✓		✓	✓	✓
	DLVP	✓	✓		✓	✓		

Architectural Linear LED

Lines of Light

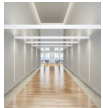
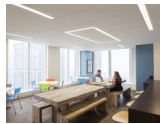
Metalux | Corelite | Neo-Ray

Good

Better

Best

Whether lighting contemporary architectural spaces or general area lighting, **Cooper Lighting Solution's architectural linear LED** products offer a complete family of innovative, affordable, and energy saving LED solutions for your next project.



Click on products to learn more

		Metalux RBG	Metalux RCG	Metalux SkyRidge Single	Corelite CL	Neo-Ray Define Standard	Neo-Ray Define Premium
APPLICABILITY ¹	Office	★★	★★	★★	★★	★★★	★★★
	Secondary Education	★★	★★	★★	★★	★★★	★★
	Primary Education	★★★	★★★	★	★★★	★★	★
	Healthcare	★★	★	★★	★	★★	★★★
	Tenant Improvement	★★★	★★★	★★★	★★★	★★	★
FEATURES / PERFORMANCE	Apertures	4"	3"	Luminous Blade	2", 4"	1.5", 2", 3", 4", 5"	1.5", 2", 3", 4", 5"
	Sizes	Fixed 2', 4', 8'	4', 8'	2', 4'	4', 8' + Continuous Runs	2'-12' + Continuous Runs	2'-12' + Continuous Runs
	Length Resolution	Fixed	Fixed	2' Increments	4' Increments	1" Increments	1" Increments
	Installation Type	Ceiling, Wall	Ceiling	Ceiling, Wall	Ceiling	Ceiling, Wall, Perimeter	Ceiling, Wall, Perimeter
	Configuration Geometry	Straight	Straight	Straight	Straight	Straight, Corners, Intersection	Straight, Corners, Intersection
	Compatible Family Fixtures	Surface/Susp & Drywall Kits	N/A	N/A	N/A	Suspended, Surface, Wall	Suspended, Surface, Wall
	lm/W (Max)	115	121	151	124	127	141
	Lms/ft (Max)	1,000	1,000	1,625	1,200	1,400	1,500
	Standard Lumen Levels	3	4	4	5	5 + Custom	5 + Custom
	Lens	Flush Frosted	Flush Frosted, Asymmetric	Wavestream	Flush Frosted, Asymmetric	Flush & Drop Frosted, Asymmetric, Louver	Flush & Drop Frosted, Asymmetric, Louver
	Emergency	Integrated, Remote Switch	Integrated	Integrated	Integrated	Integrated	Integrated
	CRI	80+	80 Standard, 90 Optional	80 Standard	80 Standard, 90 Optional	80 Standard, 90 Optional	80 Standard, 90 Optional
	Ceiling Integration / Flange Type	Standard T-Grid, Gypsum	Standard T-Grid, Gypsum	Standard T-Grid, Gypsum	6 Common Architectural Systems	>12 Architectural Ceiling Systems	>12 Architectural Ceiling Systems
	DLC	Standard	Standard	Standard & Premium	Standard	Standard & Premium	Standard & Premium
	VividTune™	No	No	No	No	No	Tunable White
INTEGRATED CONTROLS	WaveLinx, Enlighted, DLVP, Stand Alone	Integrated or Tile Mount	Integrated	Tile Mount	Integrated	Integrated or Tile Mount	Integrated or Tile Mount
	Integral Downlights	N/A	N/A	N/A	N/A	Optional Fixed or Adjustable	Optional Fixed or Adjustable
	White Tuning	N/A	N/A	N/A	N/A	N/A	Available

Notes: 1. ★★★ = high applicability, ★★ = medium applicability, ★ = low applicability, blank = non-applicable

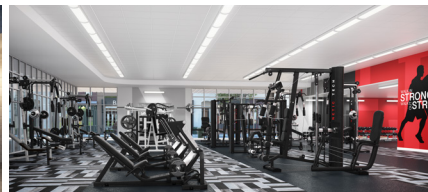
Fail-Safe

Fail-Safe is a leading provider of specialty grade lighting products designed to perform in a wide variety of complex environments.

Fail-Safe's complete family of luminaires are designed to meet the most demanding applications needs in medical / healthcare, vandal resistant, correctional, cleanroom, and specialty / custom lighting.

The product selection guides are simple yet powerful tools to help assist with product comparisons and selection based on features, performance and value.

- 14 **Cleanroom Spaces - LED**
- 15, 16 **Medical Spaces - LED**
- 17, 18 **Correctional Spaces - LED**
- 19 **Linear Vandal Resistant - LED**
- 20 **Indoor Vandal Resistant - LED**
- 21 **Vandal Resistant Wall Packs - LED**
- 22 **Downlights - LED**
- 23 **Troffer - LED**
- 24 **Behavioral Health - LED**





Cleanroom Ratings

- ISO standard ratings (1-9) are used to identify products suitable for those cleanroom rated conditions.
- FED-STD-209E has been replaced by ISO 14644-1, but is still referenced in some specifications.
- For both systems, lower numbers correspond to stricter cleanroom ratings.



Hose Down Ratings

- IP 65 is low pressure hose down.
- IP 66 is high pressure hose down.
- First digit signifies dust ingress protection rating (1-6) and second digit represents liquid ingress protection (1-6 for hosedown). In both cases, the higher the number, the better the seal on the fixture.



NSF Ratings

- NSF (National Sanitation Foundation) provides certified product for use in commercial food processing applications.
- NSF rating can serve as a good indicator of the ability to easily clean/wipe down products.



Narrow Spectrum Illumination

- Red light is used in vivarium (enclosed structure for animal observation or research) applications.
- Green light is used in operating rooms.
- Amber and Yellow are used in various industrial processes.

Click on products to learn more



	CFA	FLD4B	FLD6B	FSP	FCZ	ENW/ENC	FSN	CLM	CLP
Mounting	Surface	Recessed	Recessed	Recessed	Recessed	Recessed	Recessed	Recessed / Surface	Recessed / Surface
ISO Rating	3		5	5	5	5	5	5	5
FED-STD-209E	1		100	100	100	100	100	100	100
Max Lumens	4,100	5,300	6,600	6,400	7,500	7,000	4,121 (4ft)	24,000	24,000
Sizes	2', 3', 4', 8'	4" Round	6" Round	1x4, 2x2, 2x4	1x4, 2x2, 2x4	1x2, 1x4, 2x2, 2x4	Fixed 2', 4', 8'	1x2, 1x4, 2x2, 2x4	1x2, 1x4, 2x2, 2x4
UL Rating	Wet Location	Wet Location	Wet Location	Wet Location	Wet Location	Wet Location	Wet Location	Wet Location	Wet Location
IP Rating		IP65/IP66	IP65/IP66	IP65/IP66	IP65	IP66	IP66	IP65	IP66
NSF		Optional	Optional	Standard	Standard	Standard	Standard	Standard	Standard
Red	Optional							Optional	Optional
Green	Optional							Upon Request	Upon Request
Amber	Optional							Upon Request	Upon Request
Yellow	Upon Request							Upon Request	Upon Request

Patient rooms



Multi-function vs multi-compartment

- Multi-function fixtures have a variety of functions and light outputs in a single fixture.
- Multi-compartment fixtures place each function in a distinctly separate compartment.

Multiple lights in one package

- Patient bed lights need to perform a variety of functions within a single fixture.
- Typical functions include ambient, exam, reading, nightlight, and chart light.

Mounting

- Patient bed lights can be ceiling mounted above or beside the bed, or to the headwall.

Operating rooms



Operating room layout

- Troffers typically used to form high lumen perimeter around operating table.
- Downlights typically used around perimeter of operating theater.

MIL-STD-461-G

- Rated to provide high level of protection against radiated and conducted electromagnetic interference (EMI).
- Protects certain sensitive equipment used in some operating rooms.

Green LEDs for auxiliary lighting

- Green LEDs used as auxiliary and supplemental lighting to primary white LEDs.
- If requested by the surgical staff, green LEDs are available for specification.

Click on products
to learn more



	MAE	MNAE	MPBL
Sizes	2' x 2', 2' x 4'	36", 48", 54", 60"	24", 36", 48"
Mounting	Recessed ceiling (above bed)	Ceiling (beside bed)	Wall Mount
Max lumens	18,000	6,100	12,650
UL Location Rating	Damp	Damp (Wet optional)	Damp
Wipedown	Optional	Standard	Standard
Tamperproof	Optional		
CRI	80, 90	80, 90	80, 90

Click on products
to learn more



	ORL	FLD6B/OR
Sizes	1' x 4', 2' x 2', 2' x 4'	6" round
Mounting	Recessed troffer	Recessed downlight
Max lumens	28,000	6,600
UL Location Rating	Wet	Wet
IP Rating	IP66	IP65 (IP66 optional)
Wipedown	Standard	Standard
NSF	Standard	Optional
CRI	80, 90	80, 90, 97
MIL-STD-461-G	Optional	Optional
Green LEDs	Optional	

Behavioral health



Form and function

- Fixtures should have aesthetic appeal while maintaining high structural security.
- Continue visual themes from non-behavioral health areas.

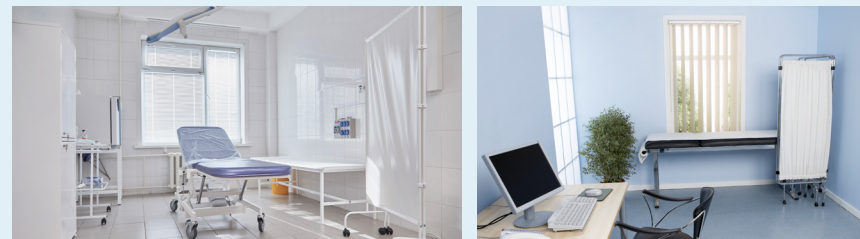
Self harm resistant

- Designed to protect against self harm by patients.
- Polycarbonate lens and tamperproof hardware used to withstand high abuse.

Disease prevention and control

- Antimicrobial Matte White paint finish protects against disease propagation.

Exam rooms



High light levels and light quality

- High lumen levels needed for performing patient examinations.
- High CRI available for aid in visual evaluation of patient and symptoms.

Ease of cleaning

- Wipedown design and NSF (National Sanitation Foundation) rating make regular cleaning of fixtures easier.

Disease prevention and control

- Antimicrobial Matte White paint finish protects against disease propagation.

Click on products to learn more



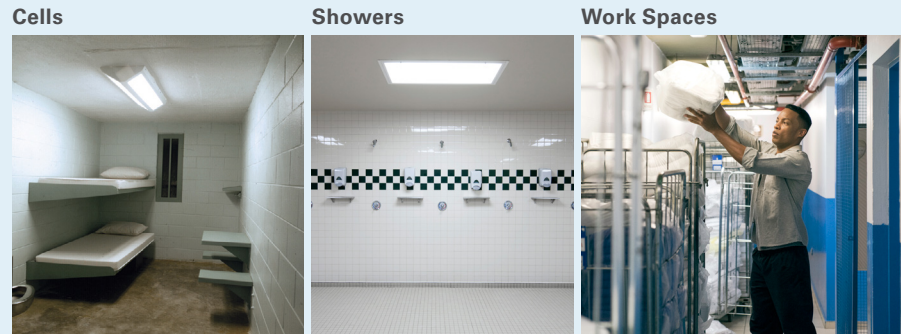
	FSP	FLD6BXV	FWL
Sizes	1' x 4', 2' x 2', 2' x 4'	6" round	18", 24", 48"
Mounting	Recessed	Recessed downlight	Wall mount
Max lumens	6,400	6,600	6,000
UL Location Rating	Wet	Wet	Damp
IP Rating	IP65/IP66	IP66	
Wipedown	Standard	Standard	Standard
Tamperproof	Standard	Standard	Standard
NSF	Standard		
CRI	80	80, 90, 97	80, 90

Click on products to learn more



	SGL	FCZ
Sizes	1' x 4', 2' x 2', 2' x 4'	1' x 4', 2' x 2', 2' x 4'
Mounting	Recessed troffer	Recessed
Max lumens	11,500	7,500
UL Location Rating	Damp (Wet optional)	Wet
IP Rating	IP65 (optional)	IP65
Wipedown	Standard	Standard
Tamperproof	Optional	Standard
NSF	Optional	Standard
CRI	80, 90	80, 90

Unsupervised Areas



- Inmates regularly present in these areas for long periods of time
- Guards only pass by periodically; not continuously present
- Fixtures typically mounted at lower heights and easy to reach
- Lens and metal thicknesses are thick to withstand regular, extended periods of potential high abuse

Supervised Areas



- Inmates occasionally present in these areas
- Guards regularly present, able to respond quickly to inmates attempting to damage fixtures
- Fixture mounting heights low, medium, or high depending on space/application
- Lens and metal thicknesses withstand intermittent, moderate abuse

Click on products to learn more



		FMB	FMR	FCC	FUSL
Applicability	Cells	★★★	★★★	★★★	★★★
	Showers		★★★	★★★	★★
	Work Spaces	★★	★★★	★★	★★★
Features	Mounting	Wall	Recessed	Corner	Surface
	Size	2', 4'	1x1, 1x2, 1x4, 2x2, 2x4	2', 4'	2', 4'
	Max Lumens	5,264 / 5,264*	9,960*	7,178*	11,832*
	Wet Location	N/A	Optional	Optional	Optional
	Max Metal Ga. / Thickness	12 ga / 0.109"	12 ga / 0.109"	12 ga / 0.109"	12 ga / 0.109"
	Max Total Lens Thickness	.750"	.875"	.875"	.687"

Notes: 1. ★★★ = high applicability, ★★ = medium applicability, ★ = low applicability, blank = non-applicable

*Max Lumens with 0.250" Polycarbonate Lens

**Nominal Lens Thickness

Click on products to learn more



		FCT	FMS	TR15
Applicability	Hallways	★★★	★★★	★★
	Cafeterias	★★	★★★	★★
	Visiting Spaces	★★★	★★★	★★★
Features	Mounting	Surface	Surface	Wall
	Size	2', 4'	1x1, 1x2, 1x4, 2x2, 2x4	15" Round
	Max Lumens*	16,700	15,300	4,875
	Wet Location	N/A	Optional	Standard
	Max Metal Ga. / Thickness	12 ga / 0.109"	12 ga / 0.109"	N/A
	Max Total Lens Thickness	.500"	.860"	0.135"

Notes: 1. ★★★ = high applicability, ★★ = medium applicability, ★ = low applicability, blank = non-applicable

Non-Correctional Areas

Offices



Entrances



Waiting Areas



- Inmates never/rarely present
- Guards rarely present
- Improved aesthetic appearance desired
- Lenses can be polycarbonate or acrylic

Click on products to learn more



		GRV	FLD6B	ENV	G12
Applicability	Offices	★★★	★★★	★★★	★
	Entrances	★★★	★★★	★★★	★★★
	Waiting Areas	★★★	★★★	★★★	★
Features	Mounting	Recessed	Recessed	Recessed	Wall
	Size	1x4, 2x2, 2x4	6" Round	1x2, 1x4, 2x2, 2x4	12" Square
	Max Lumens	18,000	7,000	6,489*	3,750
	Wet Location	N/A	Standard	Standard	Standard
	Max Total Lens Thickness	0.187"	0.375"	0.250"	0.135***

Notes: 1. ★★★ = high applicability, ★★ = medium applicability, ★ = low applicability, blank = non-applicable

*Max Lumens with 0.250" Polycarbonate Lens

**Nominal Lens Thickness

Security Level	Super Max	Max	Medium	Minimum	High Abuse	Non-Correctional
Metal Material	Steel / Stainless	Steel / Stainless	Steel / Stainless	Steel / Stainless	Steel / Stainless / Aluminum	Steel / Aluminum
Door Gauge	12 ga	14 ga	16 ga	18 ga	20 ga	N/A
Housing Gauge	14 ga	14 ga	16 ga	16 ga	20 ga	N/A
Lens	0.375" Polycarbonate or Tempered Glass	0.250" Polycarbonate or Tempered Glass	0.187" Polycarbonate or Tempered Glass	0.156" Polycarbonate or Tempered Glass	0.125" Polycarbonate	0.125" DR Acrylic
Areas	Unsupervised Areas					
	Supervised Areas					
	Non-Correctional Areas					

Control Systems

		TCS Touch Control System	SPS Security Push System	Commercial Switch / Dimmer
Control Systems	TCS Touch Control System	<ul style="list-style-type: none"> • High security capacitive touch bolt • Remote override capacity • Integral to fixture or remote in wall 	<ul style="list-style-type: none"> • Security push switch, integral to fixture • Local single fixture/circuit control 	<ul style="list-style-type: none"> • Non-tamper resistant • Offers on/off and dimming
	SPS Security Push System			
	Commercial Switch Dimmer			

Linear Vandal Resistant LED

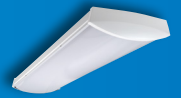
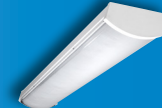
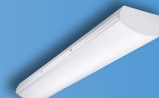
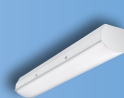
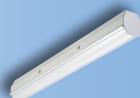
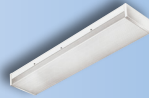
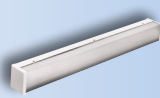
Fail-Safe

Good

Better

Best

Click on products
to learn more



		FVS4	FVS8	HVSL2	HVSL4	HVSL8	HVSL12	HVL8	HVL12
APPLICABILITY ¹	Behavioral Health	★	★	★★	★★	★★★	★★	★★	★★
	Outdoor Vandal Resistant	★★	★★	★★	★★	★★	★★	★★	★★
	Indoor Vandal Resistant	★★★	★★★	★★★	★★★	★★★	★★★	★★★	★★★
	Industrial High Abuse	★★★	★★★	★★★	★★★	★★★	★★★	★★★	★★★
	Multifamily homes	★★	★★	★★★	★★★	★★★	★★★	★★	★★
MOUNTING	Wall	✓	✓	✓	✓	✓	✓	✓	✓
	Ceiling	✓	✓	✓	✓	✓	✓	✓	✓
	Pendant			✓	✓			✓	✓
FEATURES	Lengths	2', 3', 4', 8'	2', 3', 4', 8'	2', 3', 4', 8'	1', 2', 3', 4', 8'	2', 4', 8'	2', 4', 8'	1', 2', 4', 8'	1', 2', 4', 8'
	Size (W x H)	4" x 3.75"	8" x 3.75"	2.5" x 2.75"	4" x 3.3"	8.5" x 3.6"	12.5" x 3.6"	8.6" x 3.6"	12.6" x 3.6"
	Maximum Lumen Output (4ft Length)	8664	13841	4083	7883	13444	12942	12690	12350
	Lens Thickness	0.125", 0.187"	0.125", 0.187"	0.085"	0.085"	0.135"	0.135"	0.135"	0.135"
	Emergency	Optional	Optional	Optional	Optional	Optional	Optional	Optional	Optional
	Occupancy	Optional	Optional	Optional	Optional	Optional	Optional	Optional	Optional
	Photocell	N/A	N/A	N/A	N/A	N/A	N/A	N/A	N/A
CERTIFICATIONS	IP	N/A	N/A	N/A	N/A	IP63	IP63	IP64	IP64
	Wet Location	Optional	Optional	Optional	Optional	Optional	Optional	Standard	Standard
	NSF	N/A	N/A	N/A	Optional	N/A	N/A	Optional	Optional

Notes: 1. ★★★ = high applicability, ★★ = medium applicability, ★ = low applicability, blank = non-applicable

Indoor Vandal Resistant LED

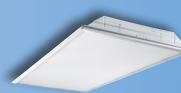
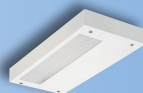
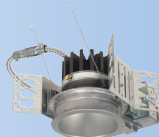
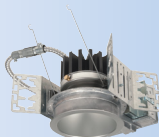
Fail-Safe

Good

Better

Best

Click on products
to learn more



		FLD4B	FLD6B	UCLV	GRV	FSP	FCZ	ENV	FSN	SGI
APPLICABILITY ¹	Behavioral Health	★★★	★★★★	★★	★★	★★★★	★★★★	★★★★	★★★★	★★★★
	Indoor Vandal Resistant	★★★★	★★★★	★★★★	★★★★	★★★★	★★★★	★★★★	★★★★	★★★★
	Indoor High Abuse	★★★★	★★★★	★	★★★★	★★★★	★★★★	★	★★★★	★
	Multifamily homes	★★★★	★★★★	★	★★	★★	★★	★★	★	★★
FEATURES	Size	4" Round	6" Round	1', 2', 3', 4'	1x4, 2x2, 2x4	1x4, 2x2, 2x4	1x4, 2x2, 2x4	1x2, 1x4, 2x2, 2x4	Fixed 2', 4', 8'	1x4, 2x2, 2x4
	Mounting	Recessed	Recessed	Undercabinet	Recessed	Recessed	Recessed	Recessed	Recessed or Surface/Suspension	Recessed
	Maximum Lumen Output	4,000	7,000	2,400	17,000	6,400	7,500	6,200	4,121 (4ft)	11,500
	Maximum Lens Thickness	0.187"	0.500"	0.187"	0.187"	0.375"	0.250"	0.375"	0.250"	0.375"
	Emergency	Optional	Optional	N/A	Optional	Optional	Optional	Optional	Optional	Optional
	Occupancy	N/A	N/A	Optional	N/A	N/A	N/A	N/A	N/A	N/A
CERTIFICATIONS	IP	IP66	IP66	IP63	N/A	IP65/IP66	IP65	IP66	IP66	IP65
	Wet Location	Standard	Standard	N/A	N/A	Standard	Standard	Standard	Standard	Optional
	NSF	Standard	Standard	N/A	N/A	Standard	Standard	Standard	Standard	Optional

Notes: 1. ★★★ = high applicability, ★★ = medium applicability, ★ = low applicability, blank = non-applicable

Vandal Resistant Wall Packs

LED

Fail-Safe

Whether lighting hallways, stairwells, prisons, or shopping plazas in a variety of high abuse applications, **Fail-Safe's** wall pack vandal resistant LED products offer a complete family of innovative, affordable, and energy saving LED solutions for your next project.



		Good		Better		Best		
								
		B95		H12	G12	TR11	TR15	FW
APPLICABILITY ¹	Behavioral Health	★★		★★	★★	★★★		★★★
	Outdoor Vandal Resistant	★★★		★★★	★★★	★★★		★★★
	Indoor Vandal Resistant	★★		★★	★★	★★★		★★
	Industrial High Abuse	★★★		★★★	★★★	★★★		★★★
	Multifamily homes	★★		★★	★★	★★★		★★★
MOUNTING	Wall	✓		✓	✓	✓		✓
	Ceiling	✓		✓	✓	✓		N/A
FEATURES	Size	5" x 9" Rectangle		12" x 12" Square	12" x 12" Square	11" Round	15" Round	6" x 12", 12" x 6", 9" x 9", 12" x 12"
	Maximum Lumen Output	1,975		4,703	3,750	2,630	4,875	2,500
	Lens Thickness	0.130"		0.156"	0.130"	0.125"		0.125"
	Emergency	N/A		Optional	Optional	Optional		Optional
	Occupancy	N/A		Optional	Optional	Optional		Optional
	Photocell	Optional		Optional	Optional	Optional		N/A
CERTIFICATIONS	IP	IP65		IP65	IP65	IP65		IP65
	Wet Location	Standard		Standard	Standard	Standard		Standard

Notes: 1. ★★★ = high applicability, ★★ = medium applicability, ★ = low applicability, blank = non-applicable

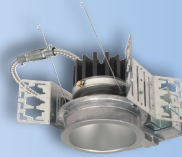
Downlights LED

Fail-Safe

Fail-Safe offers an assortment of downlights intended for a variety of customer applications. Whether it's high abuse environments, medical spaces, or even MRI suites, **Fail-Safe's** downlight fixtures meet the most stringent requirements and still deliver the aesthetic appeal desired by customers.



Click on products to learn more



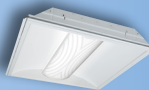
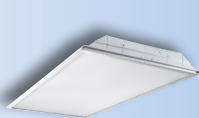
		FLD4B Open Medical 4"	FLD4BX Enclosed 4"	FLD6B Open Medical 6"	FLD6BX Enclosed 6"	FLD6BX / OR Operating Room	MRI-R6DNLT MRI Downlight
APPLICABILITY ¹	Vandal Resistant / Behavioral Health	★	★★★	★	★★★		
	Correctional		★		★★		
	Food Processing	★★★	★★★	★★★	★★★	★	
	Cleanroom			★★★	★★★	★★	
	Medical (non-OR)	★★★	★★★	★★★	★★★	★	
	Operating Room	★	★★	★	★★	★★★	
	MRI						★★★
CONFIGURATIONS	Open	✓	✓	✓	✓		✓
	Bottom Lens		✓		✓		
	Bottom Trim Ring				✓	✓	
FEATURES	Size	4"	4"	6"	6"	6"	6"
	Max Lumens	5,000	5,000	7,000	7,000	5,000	1,800
	Tamperproof	—	Optional	—	Optional	—	—
	VividTune	Available	Available	Available	Available	—	—
	Dim to Warm	Available	Available	Available	Available	Available	—
	Non-Ferrous	—	—	—	—	—	Standard
	Remote Driver	—	—	—	—	—	Standard
CERTIFICATIONS	UL	Wet	Wet	Wet	Wet	Wet	Damp
	IP	IP65	IP65/IP66	IP65	IP65/IP66	IP66	—
	NSF	Available	Available	Available	Available	Available	—
	MIL-STD-461-G	—	—	—	—	Available	—
	ISO Cleanroom ²	5	5	5	5	5	—

Notes: 1. ★★★ = high applicability, ★★ = medium applicability, ★ = low applicability, blank = non-applicable. 2. Fixtures rated ISO 5 are compatible with cleanrooms rated ISO 5 or higher.

Good

Better

Best

Click on products
to learn more

		GRW	GRV	FSP	FCB	FCZ	ENW/ENC	ENV	CLM	CLP	FSN	SGI
APPLICABILITY ¹	Vandal Resistant	★	★★★★	★★	★★	★★★★	★	★★★★	★	★	★★★★	★★★★
	High Abuse	★	★★★★	★★★★	★★	★★★★	★★	★★★★	★★	★	★★★★	★★★★
	Healthcare	★	★	★★★★	★★★★	★★★★	★★★★	★★	★	★	★★★★	★★★★
	Behavioral Health	★	★★★★	★★	★★	★★★★	★	★★★★	★	★	★★★★	★★★★
	Cleanroom	★		★★★★		★★	★★★★	★★	★★★★	★★★★	★★	★
	Pharmaceuticals	★★		★★★★	★	★★	★★★★	★★	★★★★	★★★★	★★	★★
	Vivariums					★			★★★★	★★★★		★★
	Hosedown	★★		★★★★	★	★★	★★★★	★★★★	★★★★	★★★★	★★★★	★★★★
	Food Prep			★★★★		★★★★	★★★★	★★	★★★★	★★★★	★★★★	★★★★
FEATURES	Size	1' x 4', 2' x 2', 2' x 4'	1' x 4', 2' x 2', 2' x 4'	1' x 4', 2' x 2', 2' x 4'	1' x 4', 2' x 2', 2' x 4'	1' x 4', 2' x 2', 2' x 4'	1' x 4', 2' x 2', 2' x 4'	1' x 4', 2' x 2', 2' x 4'	1' x 4', 2' x 2', 2' x 4'	1' x 4', 2' x 2', 2' x 4'	Fixed 2', 4', 8'	1' x 4', 2' x 2', 2' x 4'
	Mounting	Grid	Grid	Grid	Grid	Grid	Grid	Grid	Grid	Grid/Flange/Surface	Surface	Grid
	Max Lumens	18,000	18,000	6,400	7,500	7,500	7,000	7,000	24,000	24,000	4,121 (4ft)	11,500
	Service from Below	✓	✓		✓				✓	✓		✓
RATINGS	Wet Location	Standard	Standard	Standard	Optional	Standard	Optional (ENW) Standard (ENC)	Standard	Standard	Standard	Standard	Standard
	IP	—	—	IP66 Optional	—	IP65 Optional	IP66	IP66	IP65	IP66	IP66	IP65 Available
	NSF	—	—	Standard	—	Standard	Standard	Standard	Standard	Standard	Standard	Available
	ISO Cleanroom ²	—	—	5	—	5	5	5	5	5	5	—

Notes: 1. ★★ ★ = high applicability, ★★ = medium applicability, ★ = low applicability, blank = non-applicable

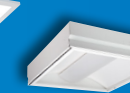
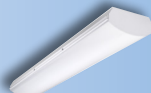
2. Fixtures rated ISO 5 are compatible with cleanrooms rated ISO 5 or higher.

Good

Better

Best

Click on products
to learn more



		FW	FWL	HVSL8B	FLD4B	FLD6B	FSP	FCB	FCZ	ENV	FSN	SGI
APPLICABILITY ¹	Patient Rooms	★★	★★★	★★★	★★★	★★★	★★★	★	★★★	★★★	★★★	★★★
	Hallways	★★	★★	★★★	★★	★★	★★	★★★	★★★	★★★	★★★	★★★
	Common Spaces	★★★	★	★★★	★★★	★★★	★★★	★★★	★★★	★★★	★★★	★★★
	Dining Areas	★★★	★	★★★	★★	★★	★★★	★★★	★★	★★★	★★★	★★
	Medical Offices	★★★	★★	★★	★★★	★★★	★★★	★★★	★★★	★★★	★★★	★★
FEATURES / CERTIFICATIONS	Mounting	Wall/Ceiling	Wall	Wall/Ceiling	Recessed Ceiling	Recessed Ceiling	Recessed Ceiling	Recessed Ceiling	Recessed Ceiling	Recessed Ceiling	Recessed Ceiling	Recessed Ceiling
	Sizes	6" x 12", 12" x 6", 9" x 9", 12" x 12"	1.5', 2', 4'	2', 4', 8'	4"	6"	1' x 4', 2' x 2', 2' x 4'	1' x 4', 2' x 2', 2' x 4'	1' x 4', 2' x 2', 2' x 4'	1' x 2', 1' x 4', 2' x 2', 2' x 4'	Fixed 2', 4', 8'	1' x 4', 2' x 2', 2' x 4'
	Maximum Lumen Output	2,500	6,000	13,400	4,000	7,000	6,400	6,500	7,500	6,100	4,121 (4ft)	11,500
	Ligature Resistant	✓	✓	✓	✓	✓	✓		✓	✓	✓	✓
	Tamperproof Screws	Standard	Optional	Optional	Optional	Optional	no screws	Optional	no screws	no screws	no screws	Optional
	IP	IP65	N/A	IP63	IP66	IP66	IP65/IP66	N/A	IP65	IP66	IP66	IP65
	Wet Location	Standard	N/A	Standard	Standard	Standard	Standard	Optional	Standard	Standard	Standard	Standard
	NSF	N/A	N/A	N/A	N/A	Optional	Standard	N/A	Standard	Standard	Standard	Available

Notes: 1. ★★★ = high applicability, ★★ = medium applicability, ★ = low applicability, blank = non-applicable

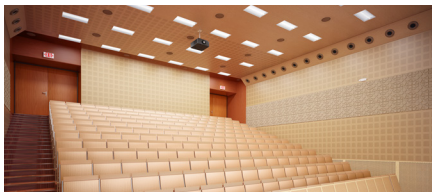
Sure-Lites

Sure-Lites has been the trusted name and industry leader for emergency and exit lighting for over 30 years. Sure-Lites offers a full line of innovative emergency and exit lighting products designed for commercial, industrial, hospitality, educational and multi-housing residential spaces.

Sure-Lites products are designed to meet and exceed today's building codes. Our products offer maximum reliability and performance while minimizing installation and maintenance costs. From ease of installation to performance-enhancing electronics to time-saving features, Sure-Lites is focused on advancing technology to develop the most effective emergency and exit lighting solutions.

The product selection guides are simple yet powerful tools to help assist with product comparisons and selection based on features, performance and value.













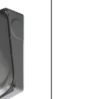
- 26 Emergency LED
- 27 Exit LED
- 28 Remote LED



Good

Better

Best

DISTRIBUTION													
COMMERCIAL													
INDUSTRIAL													
SPECIFICATION													
		SELWT29SD SELW29SD				SEL50R7SD/ SEL25R10SD/ SEL60R4SD							
		SELW25	SEL50 SEL25 SEL17	SEL60R4	SEL60R10SD/ SEL50R14SD/ SEL25R16SD	SELM60R4SD	SELM60R10SD/ SELM50R14SD/ SELM25R16SD	SELMREC	SELA	SELDWA	SELMTG	AEL2SD	
	APEL												
													
Series	APEL	SELW	SEL	SEL	SEL	SELM	SELMREC	SELA	SELDWA	SELMTG	AEL2	SELIN60SD	SELD
Material	Polycarbonate	Polycarbonate	Polycarbonate	Polycarbonate	Polycarbonate	Sheet Metal	Sheet Metal	Polycarbonate	Die cast AL	Sheet metal	Die Cast AL	Fiberglass	Die Cast AL
Source	LED	LED	LED	LED	LED	LED	LED	LED	LED	LED	LED	LED	LED
Coverage	15 feet	25 or 29 feet	17/25/50 feet	25/50/60 feet	25/50/60 feet	25 feet or 60 feet	25, 50 or 60 feet	29 feet	29 or 50 feet	60 feet	25 feet	25, 50 or 60 feet	60 feet
Battery	Nickel cadmium	Nickel cadmium	Nickel cadmium	Nickel cadmium	Nickel cadmium	Nickel cadmium	Nickel cadmium	Nickel cadmium	Nickel cadmium	Nickel cadmium	Nickel cadmium	Nickel cadmium	Nickel cadmium
Remote Capability	No	NA	No	4 to 10 watts	10 to 16 watts	4 to 16 watts	4 to 10 watts	No	NA	5 watts	No	Yes	Yes
Color	White	Ag/BK/WH/BZ	White or Black	White or Black	White or Black	White	White or Black	White or Black	Ag/BK/WH/BZ	White or Black	Ag/BK/WH/BZ	Grey	Ag/BK/Wh
Temp Range	10° C to 40° C	0° C to 40° C / -20° C to 55° C	0° C to 40° C	0° C to 40° C	0° C to 40° C	0° C to 40° C	0° C to 40° C	0° C to 40° C	0° C to 40° C	0° C to 40° C	-30° C to 55° C	0° C to 40° C	-30° C to 50° C
Self Diagnostics	No	Option	Option	Option	Standard	Standard	Standard	Standard	Standard	Standard	Option	Standard	Standard
UL Rating	Damp location	Wet Location	Damp location	Damp location	Damp location	Damp location	Damp location	Damp location	Wet location	Damp location	Wet Location	NEMA4x	NEMA 4X / HAZ option
Always On	No	No	No	No	No	No	No	No	No	No	Yes	No	No
Availability	Stock	Stock	Stock	Stock	Stock	Stock	Stock	Stock	Stock	Q2 2019	Stock	Stock	Stock

Click on products
to learn more

Good

Better

Best

DISTRIBUTION



COMMERCIAL



INDUSTRIAL



SPECIFICATION

Click on products
to learn more

	APX	APC	LPXSD LPX	CXSD	LPXC	EUS EUR	LPXW Outdoor	EUXSD EUX	ACE	ELX/ES	UX HAZ UX
											
Series	APX	APC/APCH	LPX	CX	LPXC	EU	LPXW	EUX	ACE	ES / ELX	UX
Type	Box	Combo	Box	Box	Combo	Edge Lit	Box	Edge Lit	Circular	Edge Lit	Box
Material	Polycarbonate	Polycarbonate	Polycarbonate	Die Cast	Polycarbonate	Aluminum	Polycarbonate	Aluminum	Aluminum	Aluminum	Die Cast AL
Mounting	Universal		Universal	Universal	Universal	Sur / Rec	Universal	Universal	Universal	Sur / Rec	Universal
Faces	Universal	Universal	Universal	Universal	Universal	Universal	One or Two	Universal	Universal	One or Two	One or Two
Letter Color	Red or Green	Red or Green	Red & Green	Red & Green	Red & Green	Red or Green	Red or Green	Red or Green	Red & Green	Red or Green	Red & Green
Housing Color	White, Black	White, Black	White, Black	Silver, Black, White	White, Black	Silver	Silver, Black, White	Silver, Black, White	Silver, Black, White	Wh, BK, BZ, BR, AL	Silver, Black, White
Self Diagnostics	N/A	N/A	Option	Option	Option	N/A	Standard	Option	Standard	Option ELX	Standard
Remote Capacity	Option	Yes	Option	No	Option	No	No	No	No	No	No
UL Rating	Damp location	Damp location	Damp location	Damp location	Damp location	Damp location	Wet location	Damp location	Damp location	Damp location	NEMA4X/HAZ
Availability	Stock	Stock	Stock	Stock	Stock	Stock	Stock	Stock	Stock	MTO	Stock

Good

Better

Best

DISTRIBUTION



COMMERCIAL



INDUSTRIAL



SPECIFICATION



Click on products
to learn more



	APWR	SRP	SRM	SPRA
Series	APWR	SRP	SRM	SPRA
Material	Plastic	Polycarbonate	Sheet Metal	Polycarbonate
Source	LED	LED	LED	LED
Number of heads	1 or 2	1 or 2	1 or 2	2
Adjustable	Yes	Yes	Yes	Yes, with forward throw
Coverage	15 feet	13 to 60 feet	13 to 60 feet	29 feet
Voltage input	3.6 volts	4.8 through 12 volts	4.8 through 12 volts	4.8 through 6 volt
Color	White, Black	White, Black, Grey	White, Black, Grey	White, Black, Silver, Grey
Temp Range	0° C to 40° C	-30° C to 60° C	-30° C to 60° C	-30° C to 55° C
UL Rating	Wet location	Wet Location	Wet Location	Wet Location
Availability	Stock	Stock	Stock	Stock

Lighting controls

Make your workspace work for you. Cooper Lighting Solution's connected lighting systems take the guesswork out of managing your facility, seamlessly adapting to patterns and preferences. With solutions that let you easily manage comfort, productivity and energy savings, it pays to be connected.

Lighting the spaces where we congregate - whether for work, for entertainment, education or services - is fundamental to our experience and performance. Maximizing those interactions requires specific design, cost and efficiency considerations.

30, 31



The product selection guides are simple yet powerful tools to help assist with product comparisons and selection based on features, performance and value.

Click on Connected product to learn more		WaveLinx Wireless	WaveLinx Wired
EQUIPMENT	Wired Switches	●	●
	Battery Switches	●	
	Wired Sensors	●	●
	Battery Sensors	●	
	Wireless fixtures	●	
	Sensor integrated fixtures	●	
	Switchpacks	●	●
	Receptacle Control	●	●
	Integration	●	●
INSTALLATION	Traditional wiring	●	●
	Modular Wiring System	●	●
	Wireless communications	●	
	Two wire communications	●	●
SOFTWARE	AV integration	●	●
	BACnet	●	●
	OpenADR	●	●
	Mobile App	●	●
	Floorplan	●	
	Alarms & Events	●	
	Energy Dashboard	●	
	API Integration	●	
APPLICATIONS	Office/ Private/ Open	●	●
	Education/ Classroom	●	●
	Industrial/ Warehouse	●	●
	Outdoor Parking Lot	●	●
	Outdoor Area Site	●	●
	Outdoor Parking Garage		●
CODE	ASHRAE 90.1 2016	●	●
	IECC 2018	●	●
	T24 2018	●	●

Why use Controls?



Rising conduit and wire costs

Conduit and copper has seen continued cost increase, as much as 22% over the past 12 months.

- Eliminate up to 60% of the wire runs
- Less wire - Less pipe



Shortage of qualified labor

80% of electrical contracting firms are reporting difficulty filling hourly craft worker positions and higher salaries.

- Save up to 45 minutes per control zone
- Less time - Less people



Installation times

Get off the job at least 40% faster simple install and simple setup.

- More jobs with the same people means more money for you
- Faster install



Energy savings

How do you make sure you meet local code and provide energy savings to your customer?

- Network Lighting Controls (NLCs) provide 47-70% savings with integrated luminaire lighting controls
- Up to 70% energy savings



Training

How do you keep up with the latest technology? Cooper Lighting Solutions provides local and classroom certification programs

- Learn how the system works in as little as 2 hours
- Simply mobile



Instructional videos

What if I need a tutorial on site? WaveLinx has fifteen, 5 minute videos that walk you through it.

- Free mobile app
- Free training videos



Utility incentives

Many states provide rebate incentives for LED fixtures with integrated sensors.

- Less material to install, and the rebate pays for it
- Incentives up to \$75 per fixture



Cybersecurity

Are you concerned with cybersecurity? Good, but know that WaveLinx has the UL2900-1 listing for Network Cybersecurity.

- Help customers stay secure
- Peace of mind that the product is backed by UL for cybersecurity

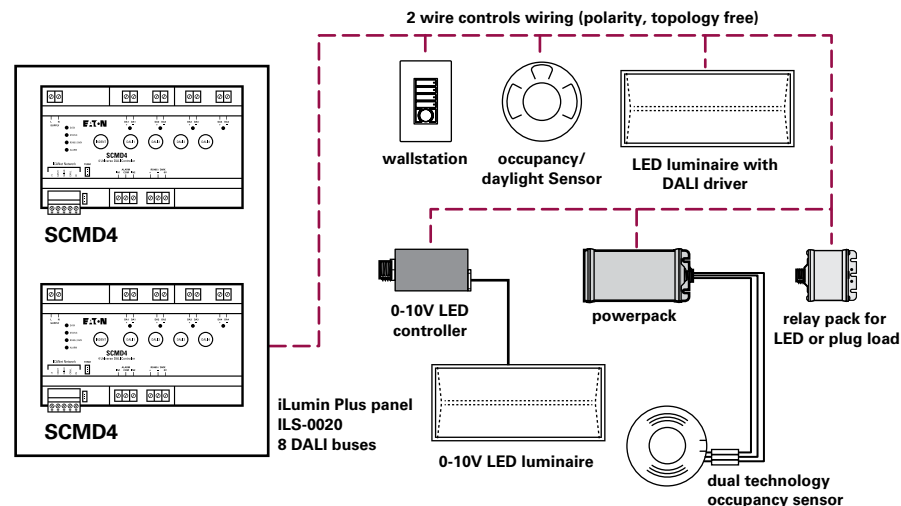
Wired or Wireless, code-compliant and cost-effective for today's Electrician



Wired

Your wired solution to control complete building lighting via area (relay), zone (0-10v) or fixture (2-wire or DMX) all from one system.

- Simplified control wiring
- Achieve more wired applications
- Control a floor or entire building



Wireless

Electrical Contractors use basic wiring practices they already know to complete projects and get off the job faster with the most comprehensive and cost effective system on the market.

- No special wiring required
- Get more jobs done faster
- Feel safe with industry best UL2900 listing
- Control a room, floor or entire building

